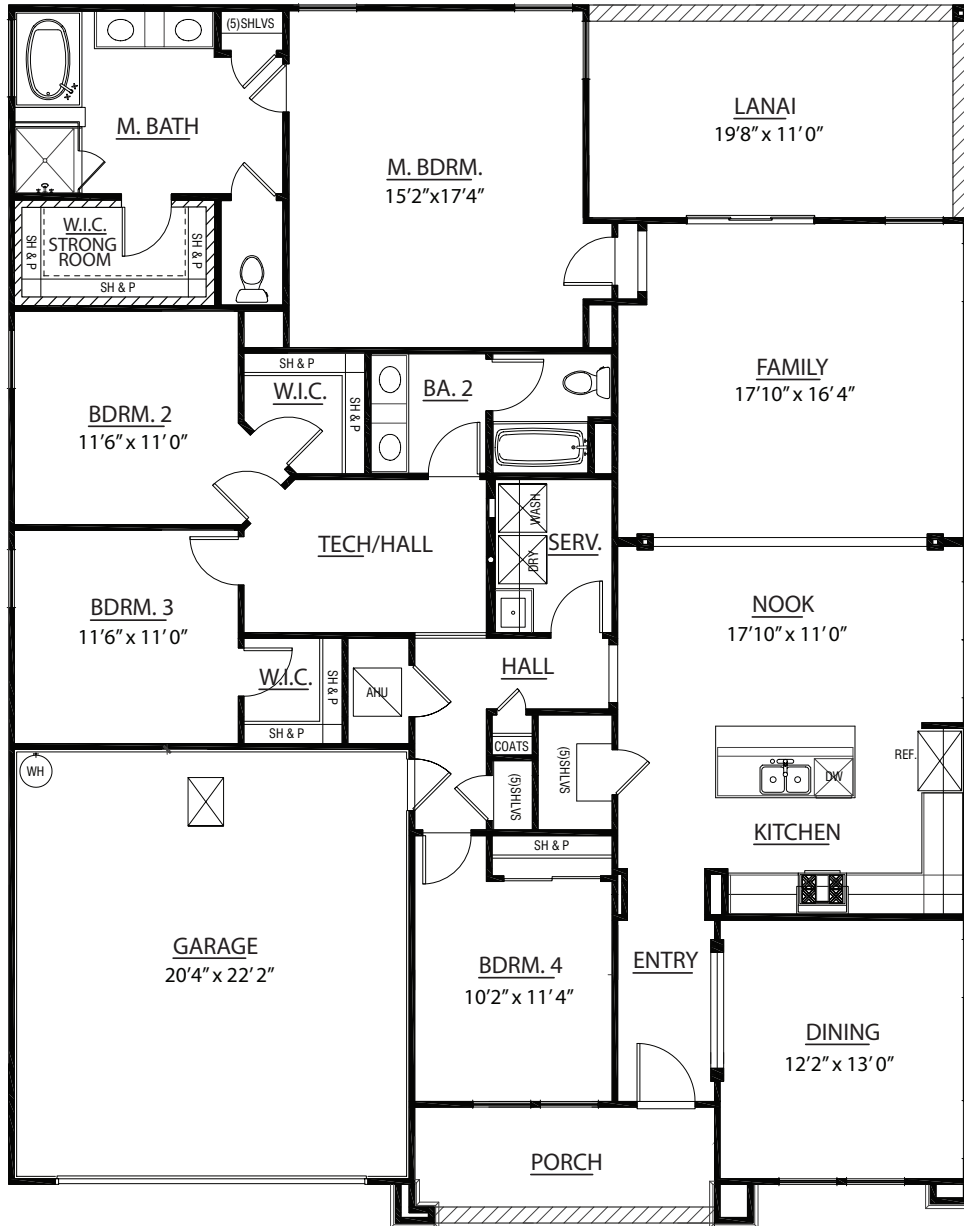


# The St. John

4 Bedrooms | 2 Baths | 2 Car Garage

2,284 Sq. Ft. Total



## Lexington Park

1398 Azteca Drive, Jacksonville, FL 32218 • Welcome Home Center 904-751-6511  
Internet New Home Consultant 877-775-3662

Plans and elevations are artist's renderings and may contain options, which are not standard on all models. Lennar reserves the right to make changes to these floor plans, specifications, dimensions and elevations without prior notice. Stated dimensions and square footage are approximate and should not be used as representation of the home's precise or actual size. Any statement, verbal or written, regarding "under air" or "finished area" or any other description or modifier of the square footage size of any home is a shorthand description of the manner in which the square footage was estimated and should not be construed to indicate certainty. Copyright © 2010 Lennar Corporation. Lennar and the Lennar logo are registered service marks of Lennar Corporation and/or its subsidiaries. 5/10

